

RUISBROEK



Characteristics of the property

| | |
|----------------------|---|
| Name | RUISBROEK |
| Address | Humaniteitslaan 65 |
| Town | 1601 Ruisbroek |
| Year of construction | 1996 |
| Year of renovation | 2020 |
| Price range | From 341.000 € to 1.850.000 € |
| Surface area range | From 343 m ² to 1.862 m ² |
| Number of floors | 3 |
| Unit(s) type | Offices |
| Soil certificate | Yes |
| Asbestos inventory | Received |
| Elevator | Yes |
| Heating type | Gas |
| Air conditioning | Yes |
| Access control | Yes |
| Outdoor parking | Yes |

16 UNITS IN THIS PROPERTY

For sale

RUISBROEK - 1.2

1601 Ruisbroek

| | |
|-------|-----------|
| Price | 341.000 € |
|-------|-----------|

| | |
|----------|---------|
| Category | Offices |
|----------|---------|

| | |
|--------------|-------------------|
| Area surface | 343m ² |
|--------------|-------------------|

| | |
|-------|----|
| Floor | +1 |
|-------|----|



RUISBROEK - 1.4

1601 Ruisbroek

| | |
|-------|-----------|
| Price | 341.000 € |
|-------|-----------|

| | |
|----------|---------|
| Category | Offices |
|----------|---------|

| | |
|--------------|-------------------|
| Area surface | 343m ² |
|--------------|-------------------|

| | |
|-------|----|
| Floor | +1 |
|-------|----|



RUISBROEK - 2.2

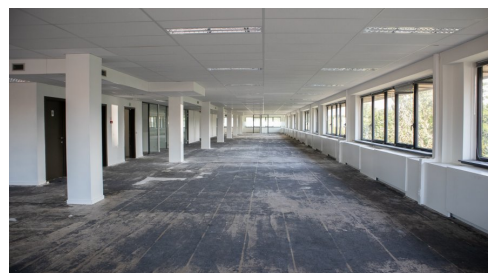
1601 Ruisbroek

| | |
|-------|-----------|
| Price | 345.000 € |
|-------|-----------|

| | |
|----------|---------|
| Category | Offices |
|----------|---------|

| | |
|--------------|-------------------|
| Area surface | 347m ² |
|--------------|-------------------|

| | |
|-------|----|
| Floor | +2 |
|-------|----|



RUISBROEK - 2.4

1601 Ruisbroek

| | |
|--------------|-------------------|
| Price | 345.000 € |
| Category | Offices |
| Area surface | 347m ² |
| Floor | +2 |



RUISBROEK - 0.1

1601 Ruisbroek

| | |
|--------------|-------------------|
| Price | 410.000 € |
| Category | Offices |
| Area surface | 412m ² |
| Floor | +0 |



RUISBROEK - 1.1 + 1.2


1601 Ruisbroek

| | |
|--------------|-------------------|
| Price | 461.000 € |
| Category | Offices |
| Area surface | 465m ² |
| Floor | +1 |




RUISBROEK - 1.3 + 1.4

1601 Ruisbroek

| | | |
|--------------|-------------------|---|
| Price | 461.000 € |  |
| Category | Offices | |
| Area surface | 465m ² | |
| Floor | +1 | |


RUISBROEK - 2.1 + 2.2

1601 Ruisbroek

| | | |
|--------------|-------------------|---|
| Price | 463.000 € |  |
| Category | Offices | |
| Area surface | 466m ² | |
| Floor | +2 | |


RUISBROEK - 2.3 + 2.4

1601 Ruisbroek

| | | |
|--------------|-------------------|---|
| Price | 463.000 € |  |
| Category | Offices | |
| Area surface | 466m ² | |
| Floor | +2 | |


RUISBROEK - 2.1 + 2.2 + 2.3

1601 Ruisbroek

| | | |
|--------------|-------------------|---|
| Price | 581.000 € |  |
| Category | Offices | |
| Area surface | 585m ² | |
| Floor | +2 | |


RUISBROEK - 2.1 + 2.3 + 2.4

1601 Ruisbroek

| | | |
|--------------|-------------------|---|
| Price | 581.000 € |  |
| Category | Offices | |
| Area surface | 585m ² | |
| Floor | +2 | |


RUISBROEK - 1.1 + 1.3 + 1.4

1601 Ruisbroek

| | | |
|--------------|-------------------|---|
| Price | 583.000 € |  |
| Category | Offices | |
| Area surface | 587m ² | |
| Floor | +1 | |


RUISBROEK - 1.1 + 1.2 + 1.3

1601 Ruisbroek

| | | |
|--------------|-------------------|---|
| Price | 583.000 € |  |
| Category | Offices | |
| Area surface | 587m ² | |
| Floor | +1 | |


RUISBROEK - 1.1 + 1.2 + 1.3 + 1.4

1601 Ruisbroek

| | | |
|--------------|-------------------|---|
| Price | 924.000 € |  |
| Category | Offices | |
| Area surface | 930m ² | |
| Floor | +1 | |

RUISBROEK - 2.1 + 2.2 + 2.3 + 2.4

1601 Ruisbroek

| | | |
|--------------|-------------------|---|
| Price | 926.000 € |  |
| Category | Offices | |
| Area surface | 932m ² | |
| Floor | +2 | |

RUISBROEK - 1 + 2

1601 Ruisbroek

| | | |
|--------------|-------------|---|
| Price | 1.850.000 € |  |
| Category | Offices | |
| Area surface | 1862m² | |
| Floor | +1+2 | |

Description

Offices for rent and for sale in Ruisbroek, in a building with excellent visibility and accessibility.

3.106 m² divided over a ground floor and 3 upper floors. Divisible. Freestanding building equipped with air conditioning, false ceilings, peripheral ducts, carpet and from a garage door.

Common roof terrace (permit issued). EPB (class) : (X) undefined – 340 kWh_{prim}/m²/year.

External parking's available. 4 common charging stations.

Easily accessible by car (exit 18 the Brussels RO ring road), by train (6 minute walking distance from Ruisbroek station), by bus (De Lijn & Stib bus stops) and by bicycle (F20 bicycle highway Halle-Brussels).

Contact



Peter De Waele

Investment & Sales Advisor

pdw@growners.be

+32 473 38 02 92

Non contractual document

GROWNERS S.A.

Ch. de Louvain 431F

B-1380 Lasne

+32 2 357 33 10

info@growners.be

BE0860.002.790

