

## GREENHILL CAMPUS H



### Characteristics of the property

Name	GREENHILL CAMPUS H
Address	Interleuvenlaan 15 H
Town	3001 Leuven
Flood zone	not located in a flood zone
Year of construction	1999
Price range	From 633.750 € to 2.300.000 €
Surface area range	From 457 m <sup>2</sup> to 1.808 m <sup>2</sup>
Number of floors	3
Unit(s) type	Offices, Archives
Soil certificate	Yes
Asbestos inventory	Received
Elevator	Yes
Air conditioning	Yes
Indoor parking	Yes
Outdoor parking	Yes

**8 UNITS** IN THIS PROPERTY

**For sale**

## GREENHILL H - 1st floor

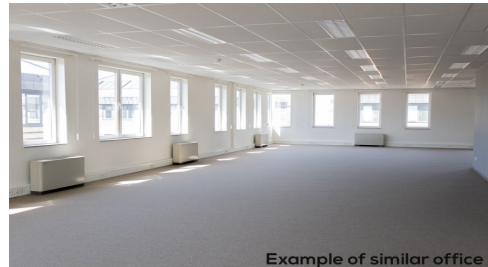
3001 Leuven

Price	633.750 €
-------	-----------

Category	Offices
----------	---------

Area surface	507m <sup>2</sup>
--------------	-------------------

Floor	1
-------	---



Example of similar office

## GREENHILL H - 2nd & 3rd floors

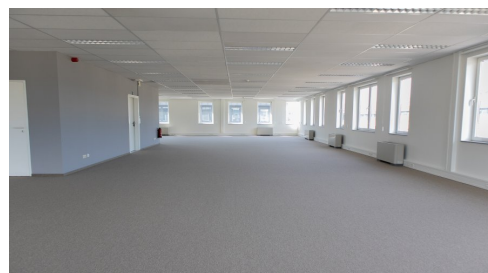
3001 Leuven

Price	903.350 €
-------	-----------

Category	Offices
----------	---------

Area surface	844m <sup>2</sup>
--------------	-------------------

Floor	2+3
-------	-----



## GREENHILL H - 1st & 2nd floors

3001 Leuven

Price	1.267.500 €
-------	-------------

Category	Offices
----------	---------

Area surface	1014m <sup>2</sup>
--------------	--------------------

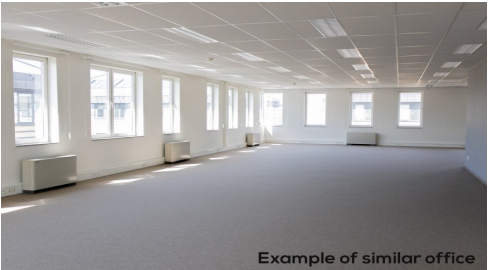
Floor	1+2
-------	-----



## For rent


### GREENHILL H - RENT - 1st floor

3001 Leuven

Monthly rent	4.647 €	 <p>Example of similar office</p>
Category	Offices	
Area surface	507m <sup>2</sup>	
Floor	1	


### GREENHILL H - RENT - 2nd + 3rd floors

3001 Leuven

Monthly rent	7.737 €	
Category	Offices	
Area surface	844m <sup>2</sup>	
Floor	2+3	


### GREENHILL H - RENT - 1st + 2nd floors

3001 Leuven

Monthly rent	9.295 €	
Category	Offices	
Area surface	1014m <sup>2</sup>	
Floor	1+2	

For investment

GREENHILL H - Invest 457 m² - Ground floor  
3001 Leuven

Price	835.000 €	
Categories	Offices - Archives	
Area surface	457m²	
Floor	+0	
Gross yield (%)	7.42%	

GREENHILL H - Invest 1.808 m² - Total building  
3001 Leuven

Price	2.300.000 €	
Category	Offices	
Area surface	1808m²	
Floor	+0+1+2+3	
Gross yield (%)	9.16%	

## Description

The building H of the Greenhill Campus is located in the prestigious Research Park of Haasrode (Leuven) which features green and picnic areas. This is a zero fossil energy building and is equipped to install photovoltaic panels, as well as electric charging stations. These offices are equipped with suspended ceilings with integrated light fixtures, cable ducts along the facades, air conditioning, a (common) kitchenette and a lift.

They are reserved to companies eligible under the "Haasrode research & business park", i.e. with main or secondary activity in R&D, innovation, IT, etc... or support for these activities.

There is a bus stop of "De Lijn" near the entrance of the Greenhill Campus Park (bus 4 (Haasrode-Leuven-Herent) and 630 (Haasrode-Leuven Station-Wijgmaal)). The park is easily accessible by car and is only 5 minutes from the E40 Brussels-Leuven-Liège (exit 23a Haasrode Research). The park also has a restaurant with a terrace. Outdoor, indoor parking, archives and showers also available.

## Contact



### Peter De Waele

Investment & Sales Advisor

[pdw@growners.be](mailto:pdw@growners.be)

+32 473 38 02 92

Non contractual document

### GROWNERS S.A.

Ch. de Louvain 431F

B-1380 Lasne

+32 2 357 33 10

[info@growners.be](mailto:info@growners.be)

BE0860.002.790

